



The new IDRA Control Panel

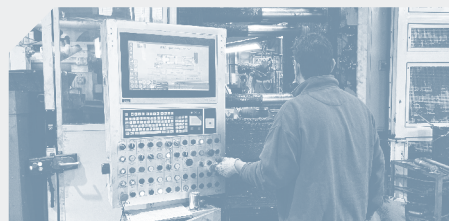
A preview of our R&D project

A step forward in terms of efficiency and usability, redesigned to be flexible and to meet the needs of all users involved.



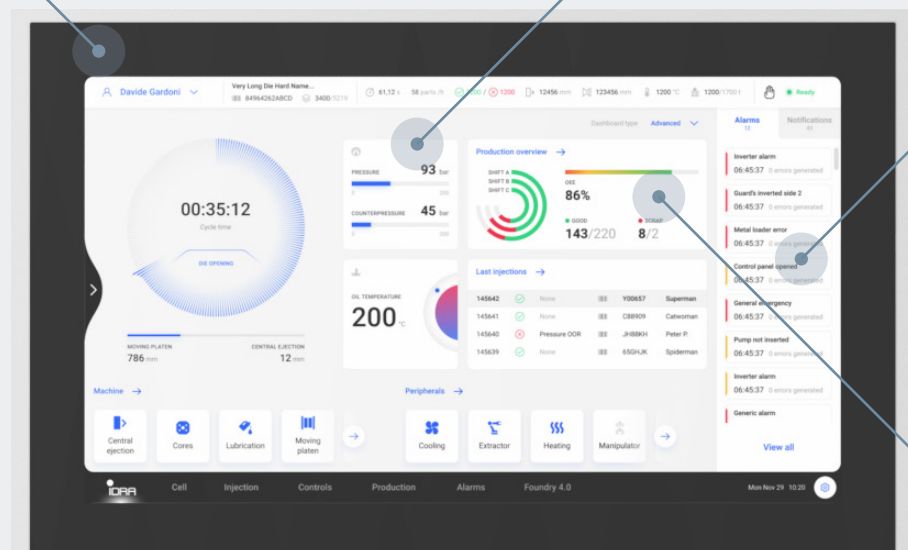
Designed with the users for the users

We worked closely with the foundry workers and all the people who regularly use the panel. This allowed us to satisfy all their needs and create a tailor-made user friendly product.



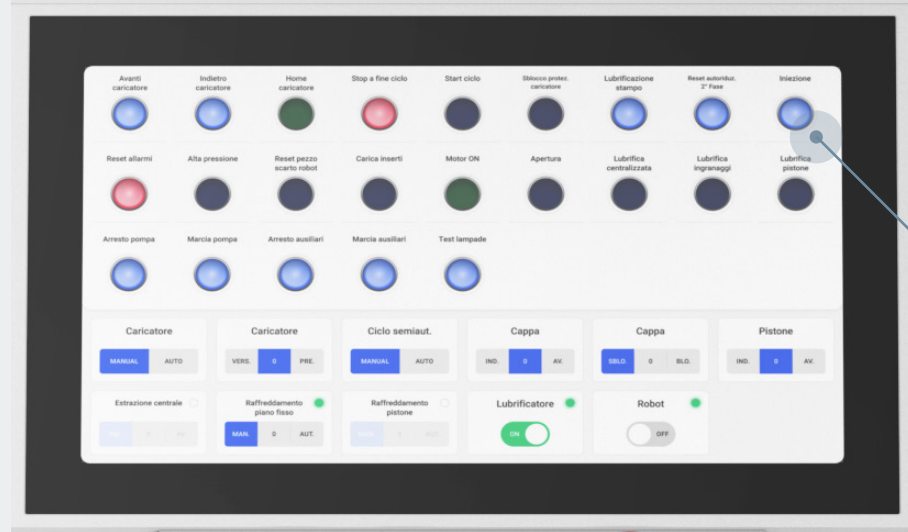
Last generation industrial multi-touch screen monitor

Automated machine settings



Improved User Experience

Intuitive User Interface



Digital button panel



Combination touchscreen and manual controls